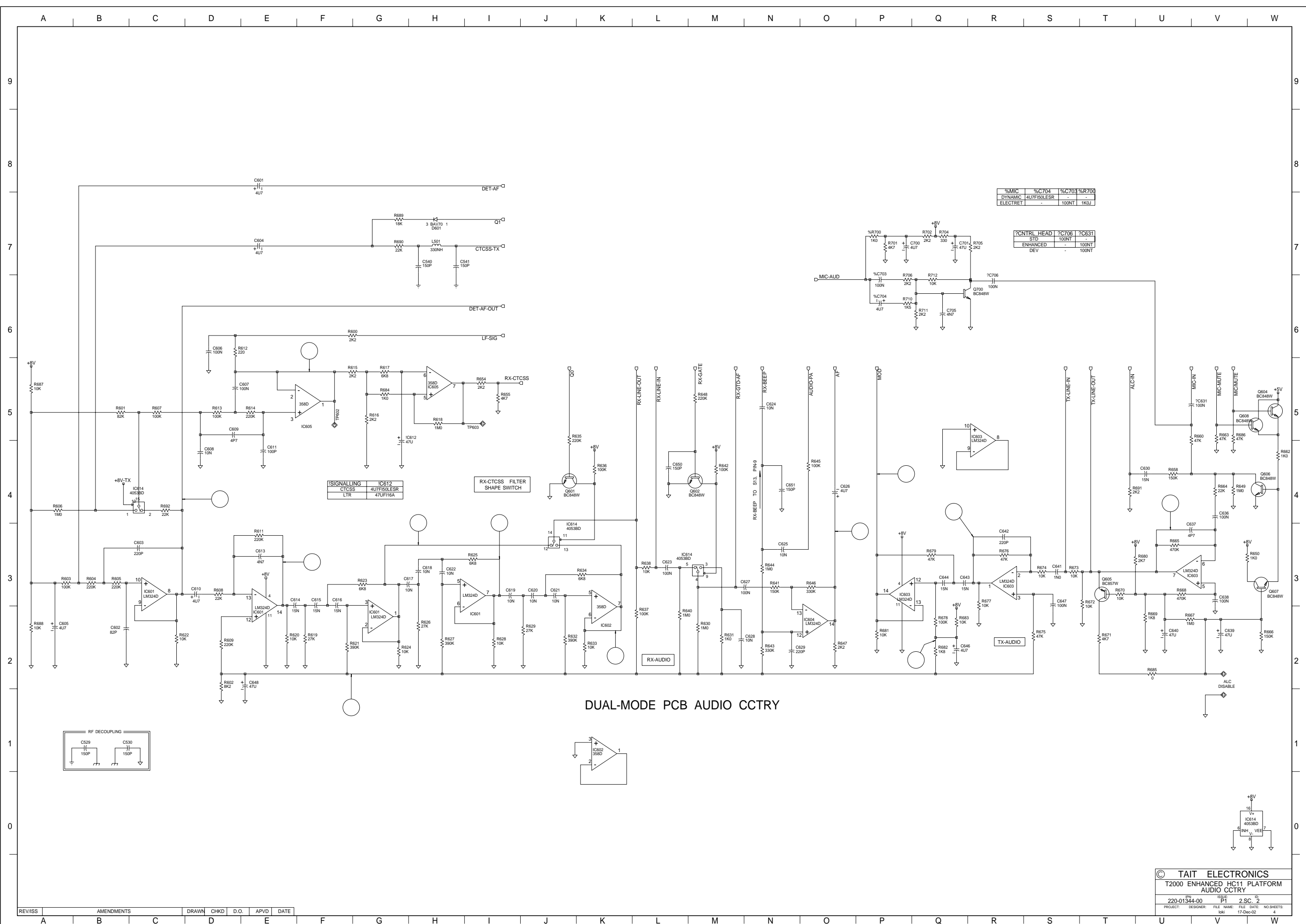


REV/ISS	ADDED	BOTTOM-SIDE	FIDUCIALS	J.F.	J.F.	12/1/94
	DRAWN	CHKD	D.O.	APVD	DATE	

© TAIT ELECTRONICS			
T2000 ENHANCED HC11 PLATFORM CONTROLBOARD			
IPN:	ISSUE:	REV:	ID:
220-01344-00	P1	2	SC. 1
PROJECT:	DESIGNER:	FILE NAME:	FILE DATE:
		17-DIG-002	
			NO. SHEETS: 4



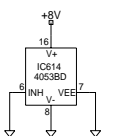
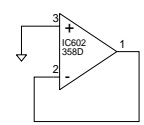
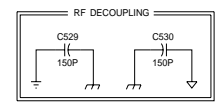
%MIC	%C704	%C703	%R700
DYNAMIC	4U7F50LESR	-	-
ELECTRET	-	100NT	1K0J

?CNTRL HEAD	?C706	?C631
STD	100NT	-
ENHANCED	-	100NT
DEV	-	100NT

ISIGNALLING	IC612
CTCSX	4U7F50LESR
LTR	47UF16A

RX-CTCSX FILTER
SHAPE SWITCH

DUAL-MODE PCB AUDIO CCTRY



© TAIT ELECTRONICS

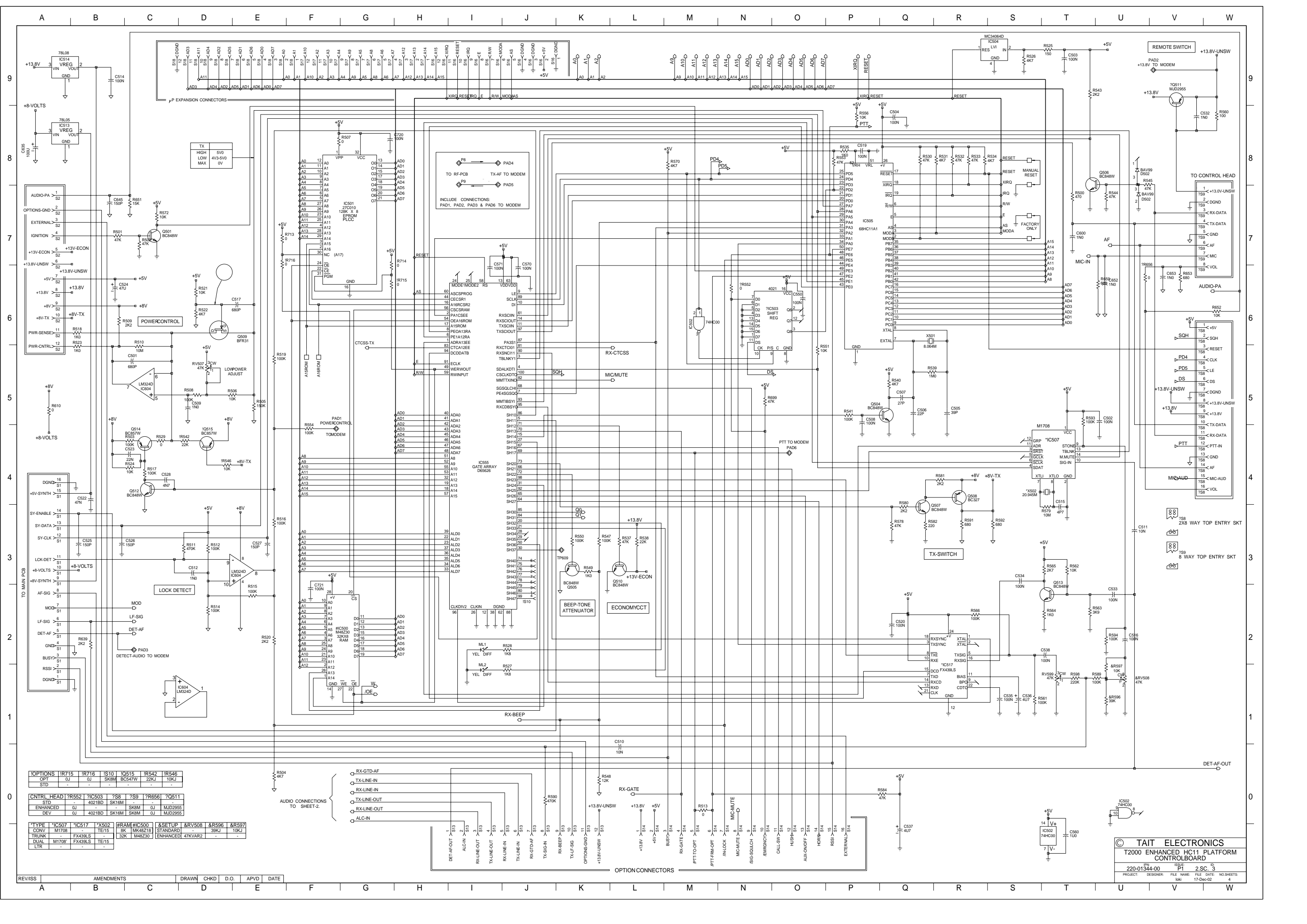
T2000 ENHANCED HC11 PLATFORM
AUDIO CCTRY

IPN: 220-01344-00 ISSUE: P1 2 SC. 2

PROJECT: DESIGNER: FILE NAME: DATE: NO SHEETS: 4

194 17-DEC-02

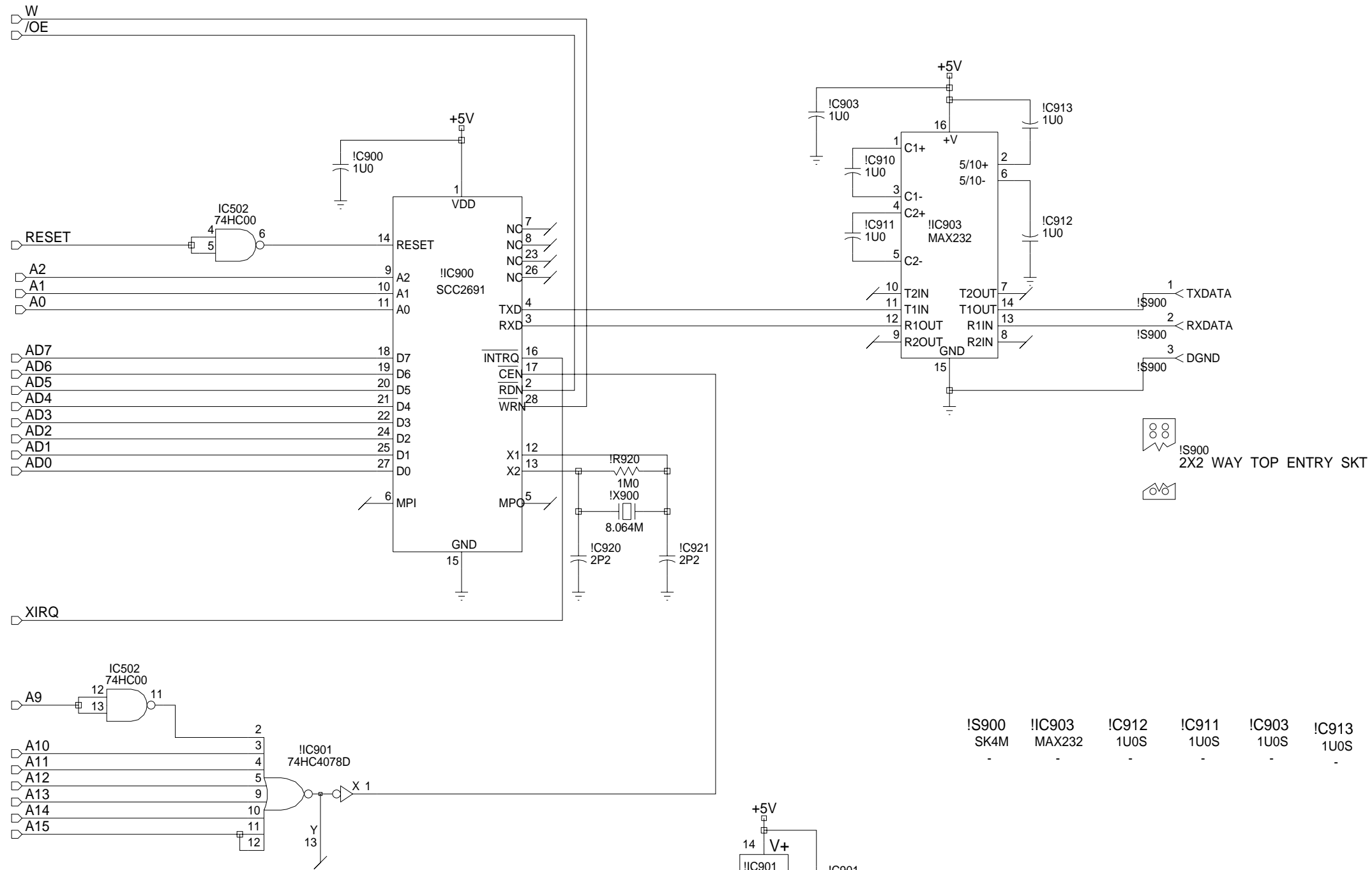
REV/ISS	AMENDMENTS	DRAWN	CHKD	D.O.	APVD	DATE
A	B	C	D	E		



IOPTIONS	IR715	IR716	IS10	IQ515	IR542	IR546			
OPT	QJ	QJ	SK8M	BC547W	22KJ	10KJ			
STD									
CNTRL HEAD	?R552	?IC503	?S8	?S9	?R656	?Q511			
STD	QJ	4021BD	SK16M	SK8M	QJ	MJD2955			
ENHANCED	QJ	4021BD	SK16M	SK8M	QJ	MJD2955			
DEV	QJ	4021BD	SK16M	SK8M	QJ	MJD2955			
*TYPE	*IC507	*IC517	*X502	*RAM	*IC500	*SETUP	*RV508	*OR596	*R597
CONV	M1708	TE15	TE15	3K	MK48230	STANDARD	39KJ	39KJ	10KJ
TRUNK	FX439LS			32K	M48230	ENHANCED	47KVAR2		
DUAL	M1708	FX439LS	TE15						
LTR									

REV/ISS	A	B	C	D	E
AMENDMENTS					
DRAWN					
CHKD					
D.O.					
APVD					
DATE					

© TAIT ELECTRONICS
 T2000 ENHANCED HC11 PLATFORM
 CONTROL BOARD
 PROJECT: 220-01344-00
 DESIGNER: P1
 FILE NAME: 2.SC.3
 DATE: 17/04/02



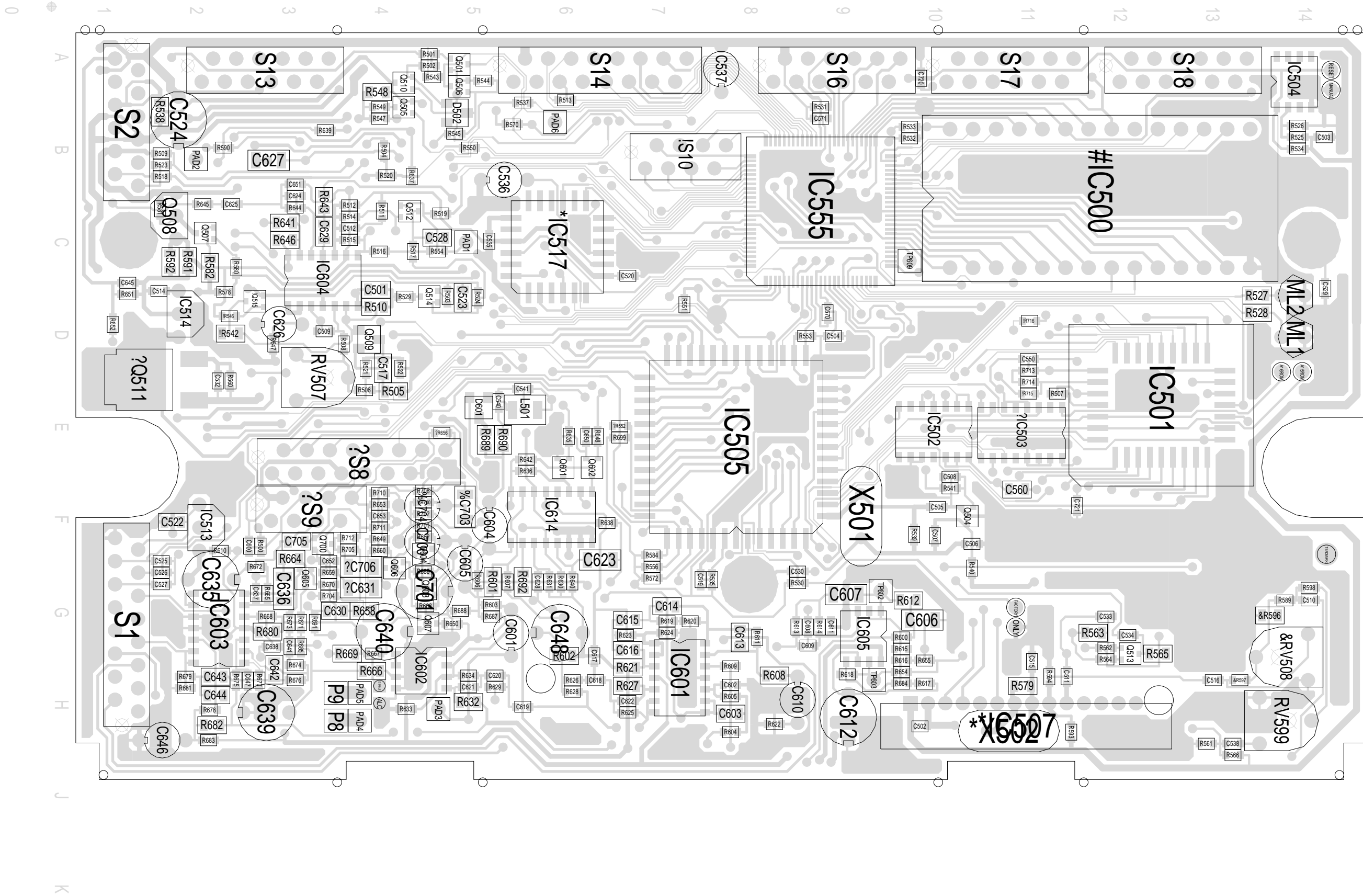
IC900 1U0S
 IC901 74HC4078D 1U0S
 IC902 74HC00 1U0S
 IC903 MAX232 1U0S
 IC910 1U0S
 IC911 1U0S
 IC912 1U0S
 IC913 1U0S
 IC920 2P2J
 IC921 2P2J
 IR920 1MG0J274-01062-00
 IX900 1U0S

IS900 SK4M
 IC903 1U0S
 IC911 1U0S
 IC912 1U0S
 IC913 1U0S
 IC910 1U0S

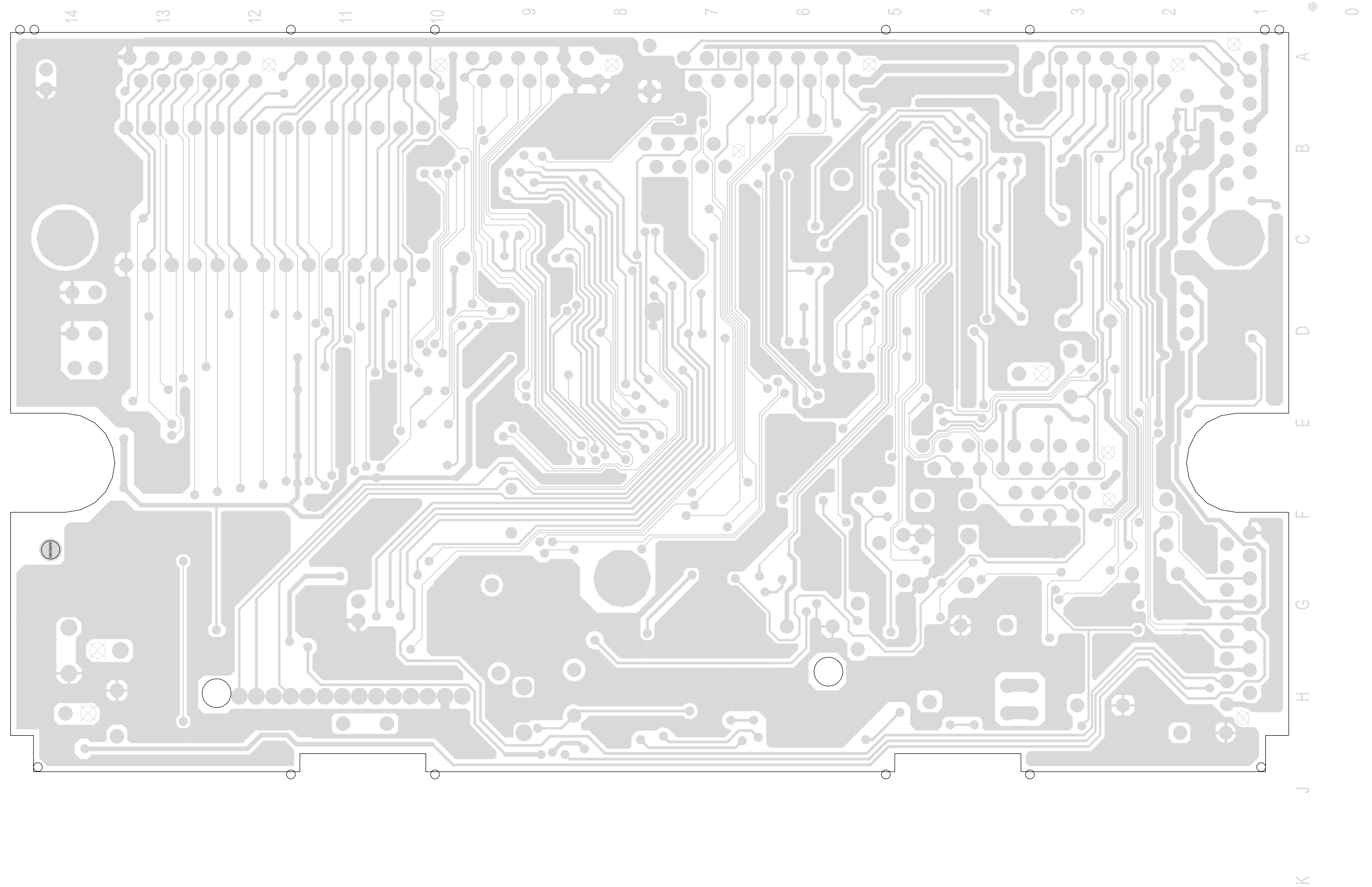
© TAIT ELECTRONICS
 T2000 ENHANCED HC11 PLATFORM
 UART + RS232

IPN: 220-01344-00	ISSUE: P1	ID: 2.SC. 4
PROJECT:	DESIGNER: loki	FILE DATE: 17-Dec-02
		NO.SHEETS: 4

REV/ISS	AMENDMENTS	DRAWN	CHKD	D.O.	APVD	DATE



TAIT ELECTRONICS IPN: 220-01344-00 ISS: P1 ID: 1.TA DATE: 17 Dec 2002
 T2K ENHANCED PCB LAYOUT - TOP SIDE



TAIT ELECTRONICS	IPN: 220-01344-00	ISS: P1	ID: 2.BA	DATE: 17 Dec 2002
T2K ENHANCED PCB LAYOUT - BOTTOM SIDE				

Scale:2.3:1 ; Rotation: 90 degrees